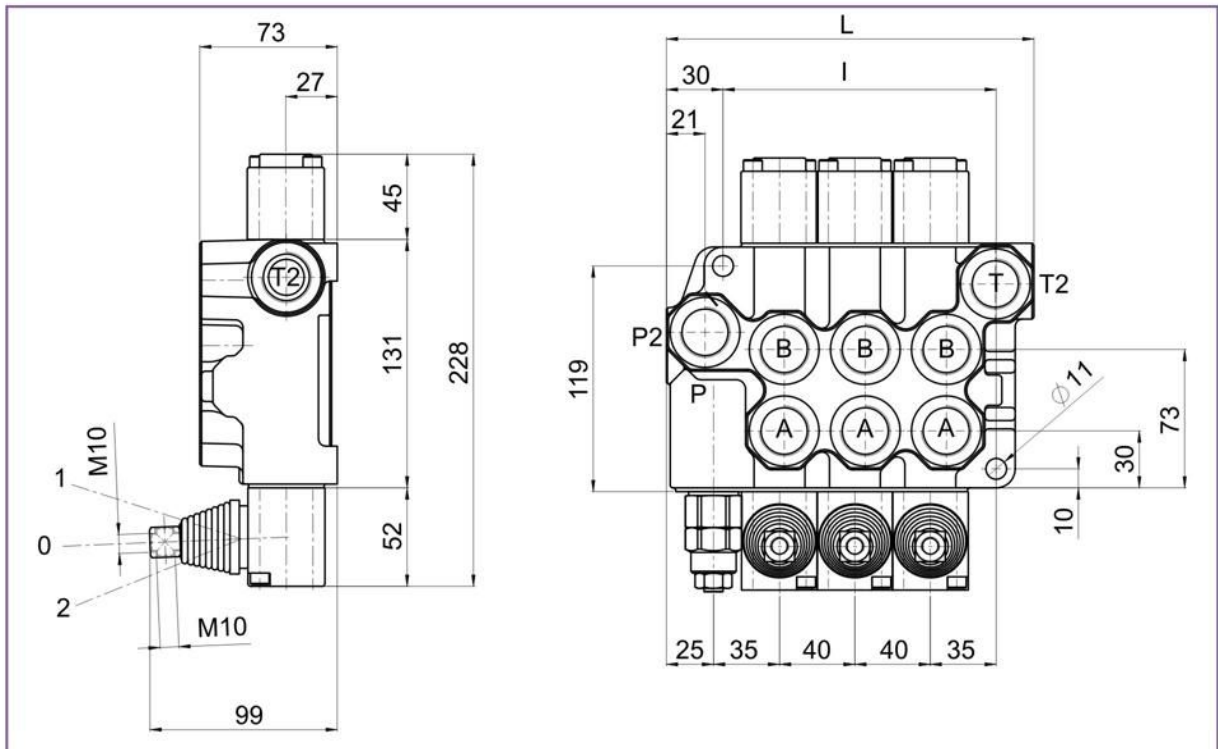
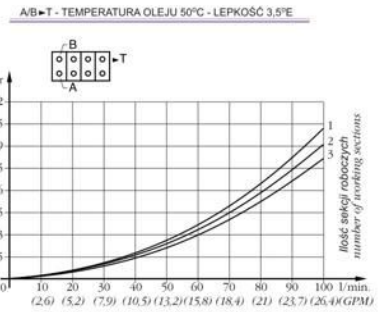
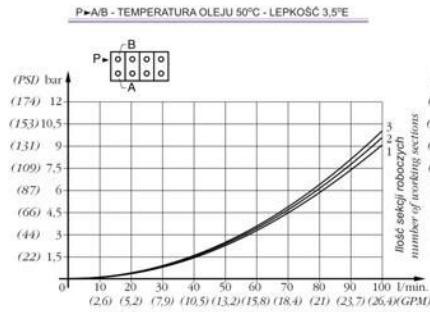
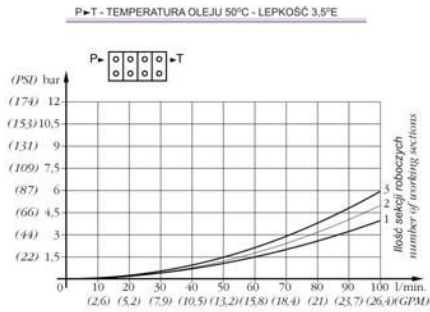


### BM100 z 1 do 3 sekcji

### BM100 from 1 to 3 levers

Charakterystyki ogólne/ Technical characteristics		
	l/min GPM	
• Wydatek nominalny / Nominal flow	90	24
• Wydatek maksymalny / Max flow	100	26
	bar PSI	
• Ciśnienie nominalne / Nominal pressure	250	3600
• Ciśnienie max na odbiornikach / Max pressure on ports	320	4700
• Max ciśnienie na powrocie / Max pressure in tank-line	80	1100



MOD	L	I	Kg
BM100/1	115	66	4,7
BM100/2	155	106	7,2
BM100/3	195	146	9,5

GWINTY STANDARDOWE - STANDARD THREAD					
COD	A-B	P	T	P <sub>2</sub>	T <sub>2</sub>
G	3/4"	3/4"	3/4"	3/4"	3/4"
F	1.1/16" - 12	1.1/16" - 12	1.1/16" - 12	1.1/16" - 12	1.1/16" - 12

Na żądanie jest dostępny inny gwint  
Other thread available on request

